



Accessible Housing Duplex



5

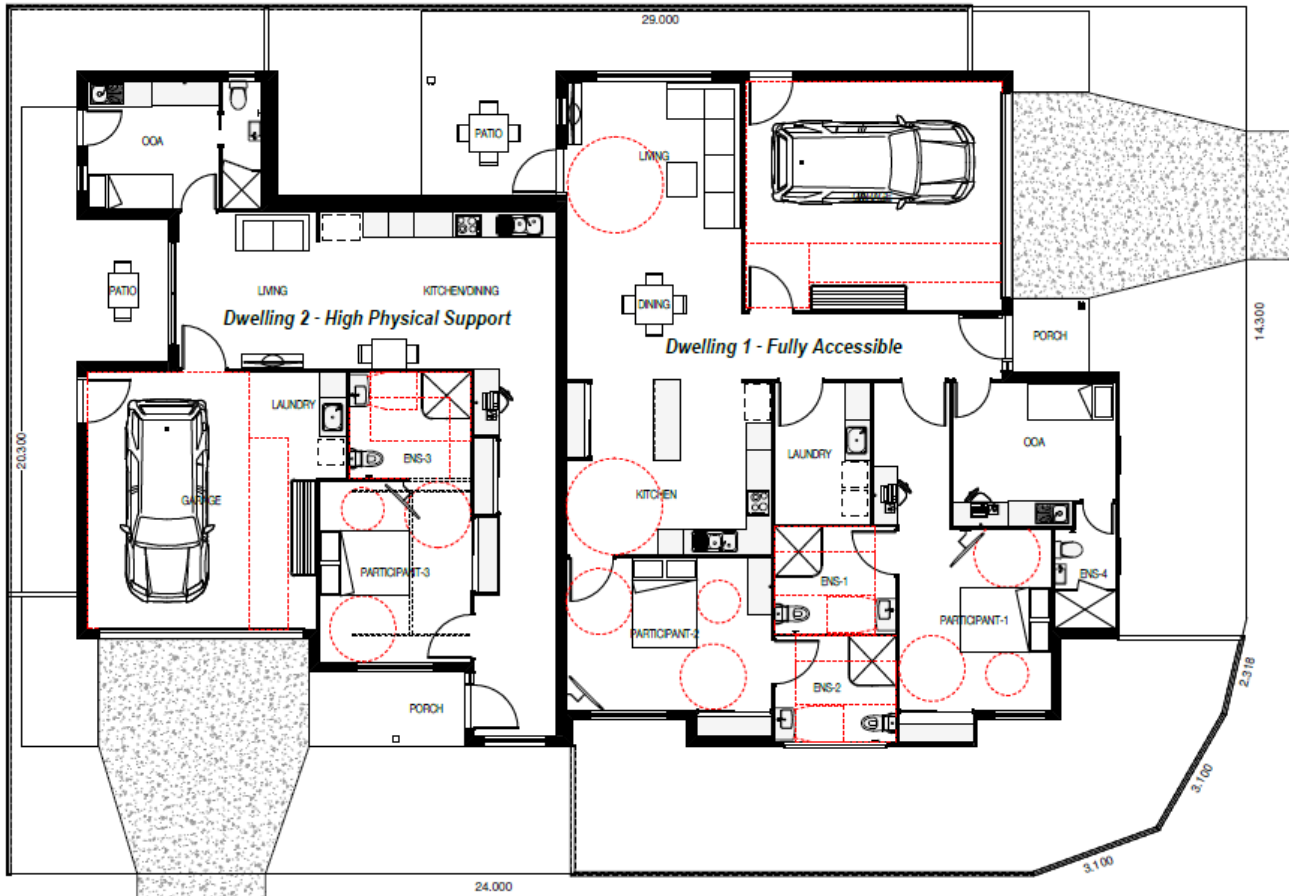


5



2

Total Home Size: 338.34m²





Zealy Good Inclusion Highlights:

- Daikin Split System Airconditioning to Master Bedroom and Living
- 20mm Smartstone Benchtops throughout
- 2590mm ceiling height
- 50m² Exposed aggregate driveway allowance
- Floor coverings throughout
- Westinghouse 900mm Kitchen Appliances
- Flyscreens to all openable windows and diamond grille screen to sliding doors
- Tiles to Porch and Alfresco
- 50m² Exposed Aggregate Driveway allowance
- Clothesline and Letterbox
- 1.85 kw Solar
- 7 Star Energy Rating