



Chalmers 295



4



2



2

Total Home Size: 295m²



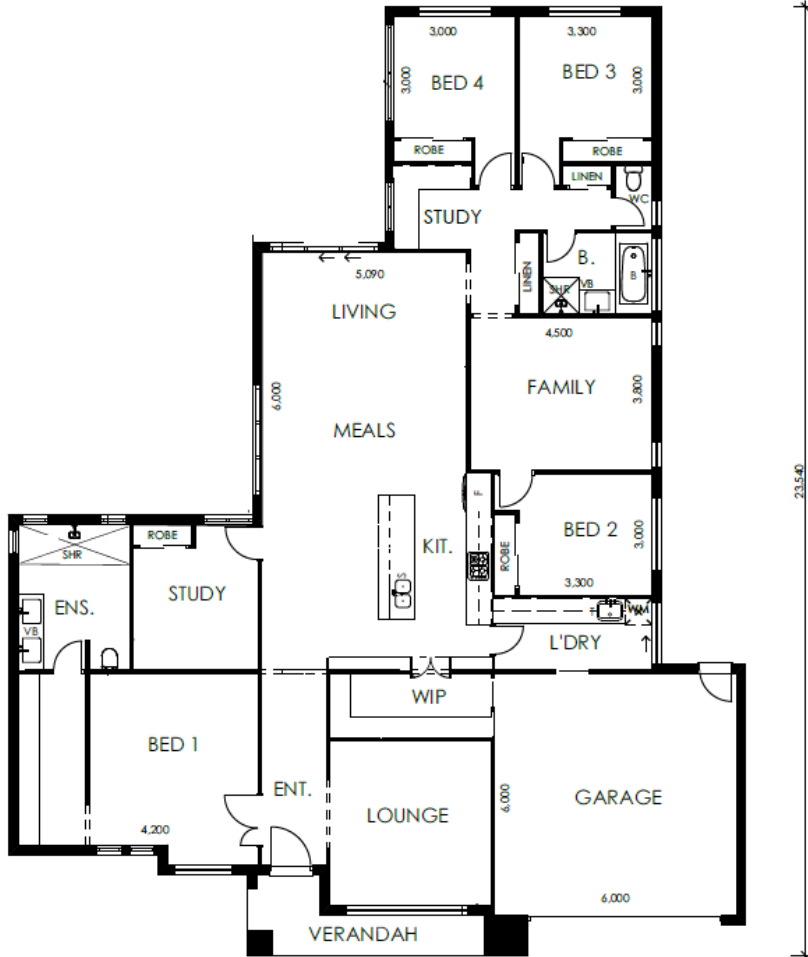
The Chalmers design is an exquisite and spacious large acreage home that promises both comfort and luxury. With its impressive features, including four bedrooms, two bathrooms, three living areas, and a chef-style kitchen with a large walk-in pantry, the Chalmers design caters to modern lifestyles and offers a retreat-like ambiance within the confines of your own home.

Contact Zeal Homes today to find out more.

Ph: 0409 337 677

Email: info@zealhomes.com.au

18,290



AREAS:	
LIVING:	235.20sqm
GARAGE:	38.94sqm
ALFRESCO:	13.16sqm
VERANDAH:	7.70sqm
TOTAL AREA:	295.00sqm

Zeally Good Inclusion Highlights:

- Daikin Split System Airconditioning to Master Bedroom and Living
- 20mm Smartstone Benchtops throughout
- 2590mm ceiling height
- 50m² Exposed aggregate driveway allowance
- Floor coverings throughout
- Westinghouse 900mm Kitchen Appliances
- Flyscreens to all openable windows and diamond grille screen to sliding doors
- Tiles to Porch and Alfresco
- 50m² Exposed Aggregate Driveway allowance
- Clothesline and Letterbox
- 1.85 kw Solar
- 7 Star Energy Rating