



Lewis 257



4



2



2

Total Home Size: 256.89m²

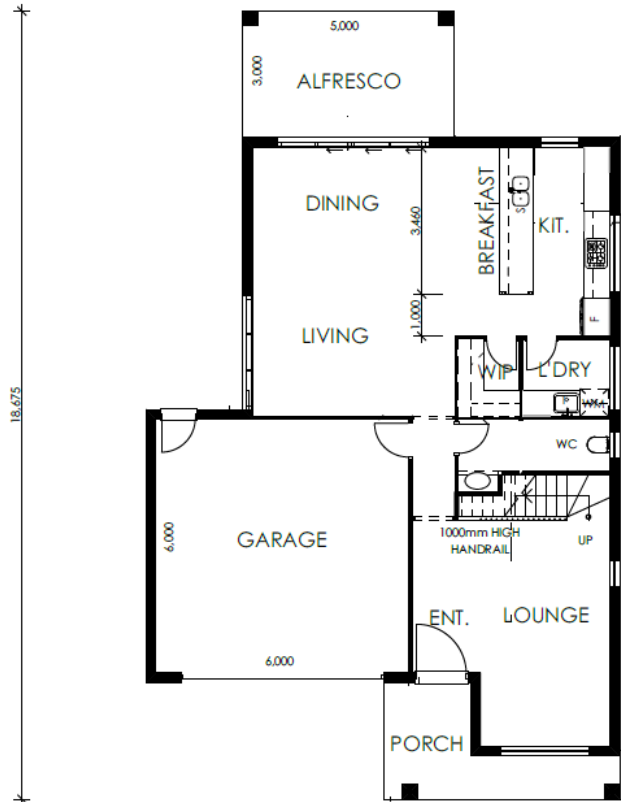


The Lewis 257 Design represents a harmonious blend of modern elegance and functional design, creating a living space that redefines the essence of luxury and comfort. This exquisite architectural creation features an array of exceptional amenities, including 4 bedrooms, 2 bathrooms, a stylish powder room, a spacious kitchen equipped with a walk-in pantry, a convenient double car garage, and an inviting alfresco area. The Lewis Design offers a seamless fusion of contemporary aesthetics, practicality, and an inviting atmosphere, elevating the concept of modern living to new heights.

Contact Zeal Homes today to find out more.

Ph: 0409 337 677

Email: info@zealhomes.com.au



Zeally Good Inclusion Highlights:

- Daikin Split System Airconditioning to Master Bedroom and Living
- 20mm Smartstone Benchtops throughout
- 2590mm ceiling height downstairs and 2440 upstairs
- 50m2 Exposed aggregate driveway allowance
- Floor coverings throughout
- Westinghouse 900mm Kitchen Appliances
- Flyscreens to all openable windows and diamond grille screen to sliding doors
- Tiles to Porch and Alfresco
- Stained Timber Stairs
- 50m2 Exposed Aggregate Driveway allowance
- Clothesline and Letterbox
- 1.85 kw Solar
- 7 Star Energy Rating

