



Slater 195



3



2



2

Total Home Size: 195.46m²

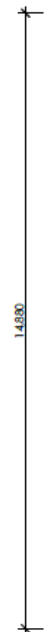
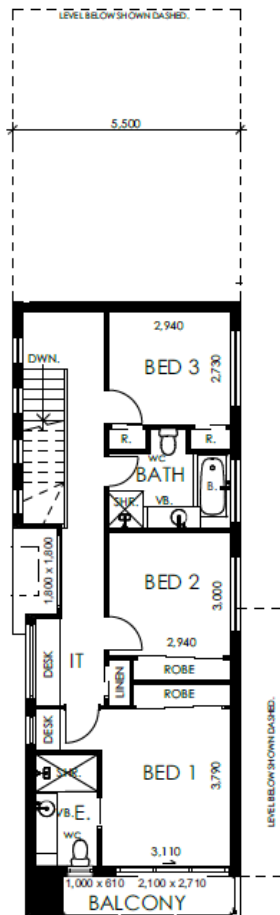
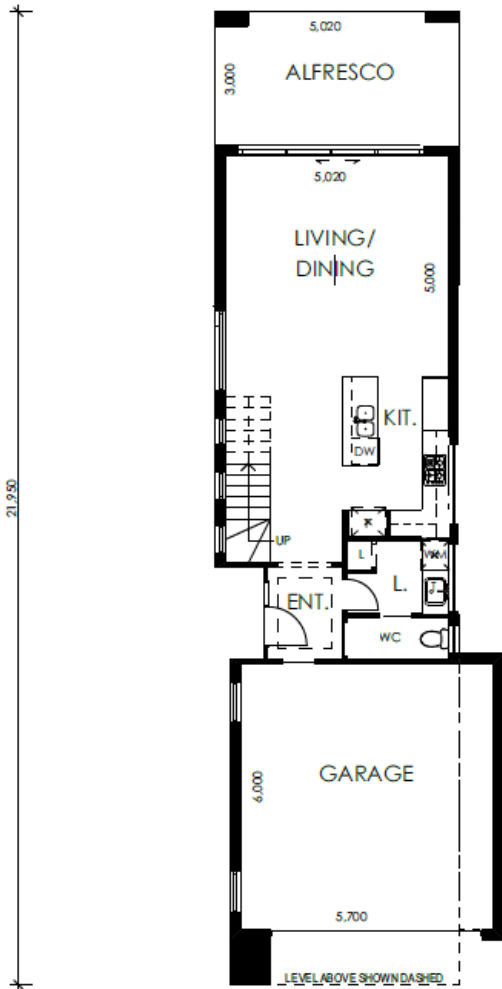


In the realm of innovation, The Slater Design stands as a testament to the art of maximising space and functionality without compromising on style. The elegant home, boasting 3 bedrooms, 2 bathrooms, a double lockup garage and dedicated study desk, has been meticulously crafted to cater to the demands of modern living on a smaller block. With its thoughtful layout, attention to detail, and emphasis on creating a harmonious living experience. The Slater Design redefines the possibilities of comfortable and efficient living.

Contact Zeal Homes today to find out more.

Ph: 0409 337 677

Email: info@zealhomes.com.au



Zealy Good Inclusion Highlights:

- Daikin Split System Airconditioning to Master Bedroom and Living
- 20mm Smartstone Benchtops throughout
- 2590mm ceiling height downstairs and 2440 upstairs
- 50m² Exposed aggregate driveway allowance
- Floor coverings throughout
- Westinghouse 900mm Kitchen Appliances
- Flyscreens to all openable windows and diamond grille screen to sliding doors
- Tiles to Porch and Alfresco
- Stained Timber Stairs
- 50m² Exposed Aggregate Driveway allowance
- Clothesline and Letterbox
- 1.85 kw Solar
- 7 Star Energy Rating