



DOOHAN 215



Total Home Size: 214.64m²



4



2



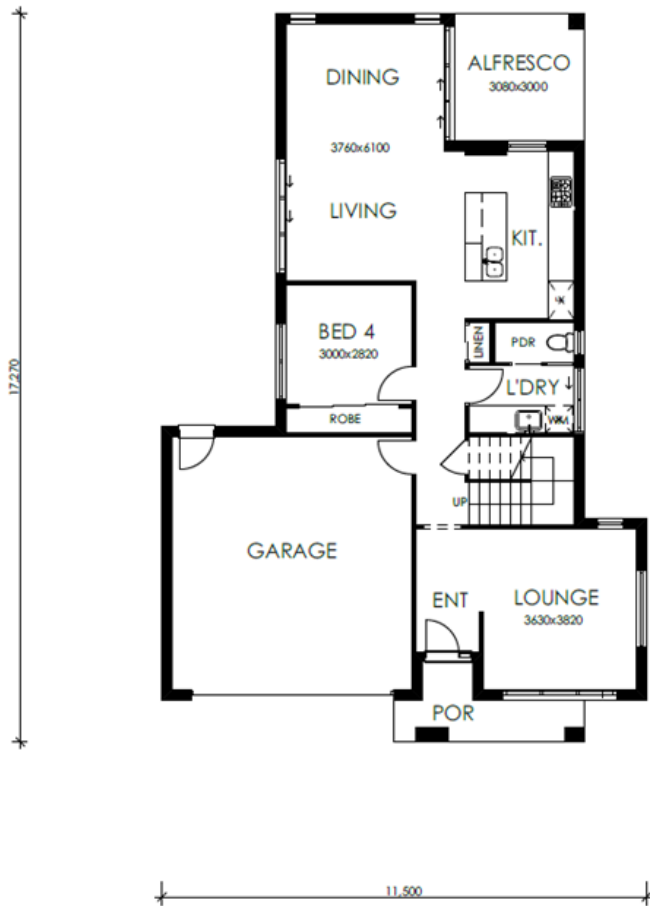
2

In the realm of urban living, The Doohan 215 Design stands as a testament to innovation and adaptability. The Double Storey, 4 bedroom, 2 bathroom house, complete with a double car garage and a charming Alfresco, redefines modern living for smaller blocks. The efficient use of space, functional layout, and aesthetic appeal make it a standout choice for those seeking a harmonious blend of comfort and style.

Contact Zeal Homes today to find out more.

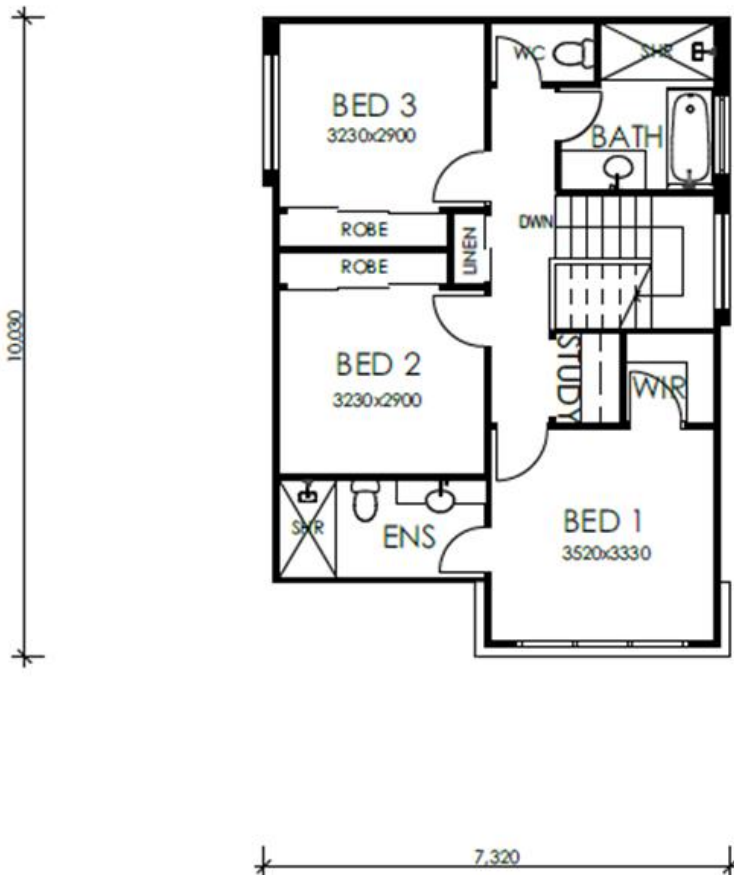
Ph: 0409 337 677

Email: info@zealhomes.com.au



Zealy Good Inclusion Highlights:

- Daikin Split System Airconditioning to Master Bedroom and Living
- 20mm Smartstone Benchtops throughout
- 2590mm ceiling height downstairs and 2440 upstairs
- 50m2 Exposed aggregate driveway allowance
- Floor coverings throughout
- Westinghouse 900mm Kitchen Appliances
- Flyscreens to all openable windows and diamond grille screen to sliding doors
- Tiles to Porch and Alfresco
- Stained Timber Stairs
- 50m2 Exposed Aggregate Driveway allowance
- Clothesline and Letterbox
- 1.85 kw Solar
- 7 Star Energy Rating



\$18,900