



Norman 287



5



3



2

Total Home Size: 287m²

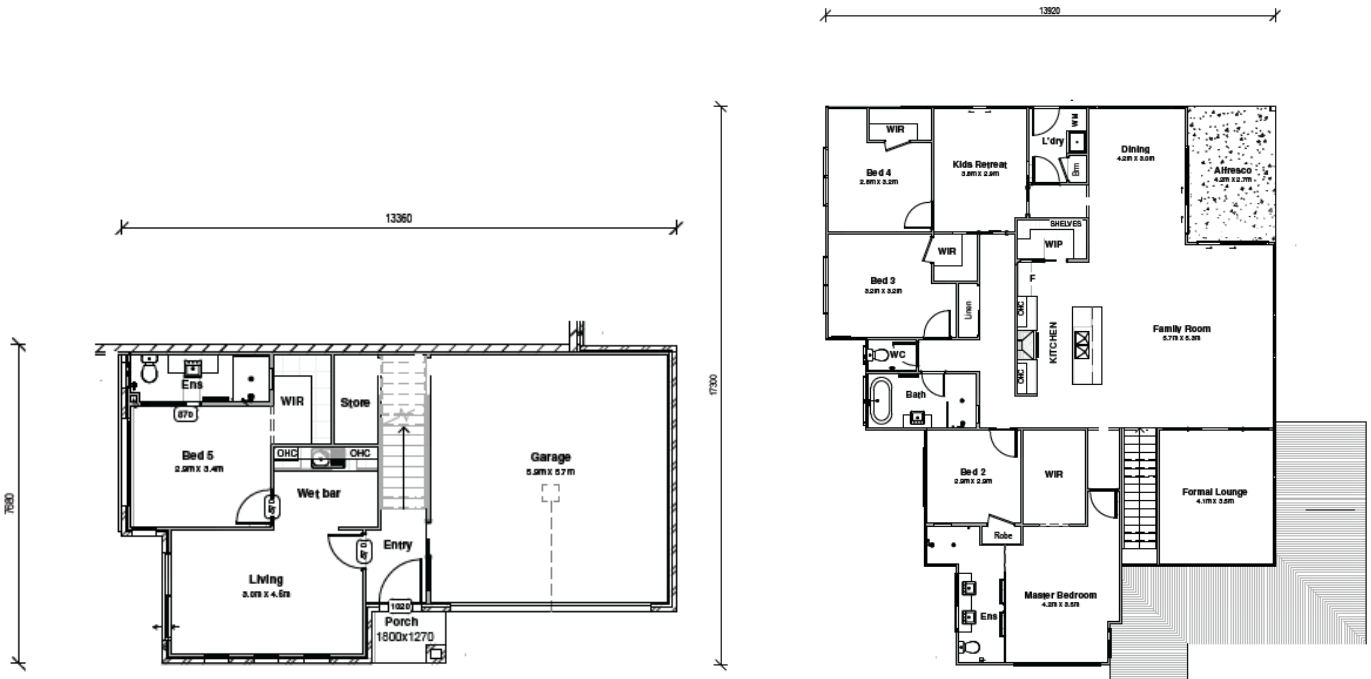


The Norman 287 Design is a modern and versatile split-level home that offers spacious living arrangements for families, along with the potential for dual living opportunities on the lower level. With its innovative design, this 5-bedroom, 3-living area, 3-bathroom home provides a comfortable and functional space for both large families and those looking to make the most of their living area.

Contact Zeal Homes today to find out more.

Ph: 0409 337 677

Email: info@zealhomes.com.au



CHOOSE YOUR INCLUSIONS LEVEL- UPGRADE REQUESTS ARE WELCOME AND WILL BE QUOTED UPON REQUEST

Zeally Good Inclusion Highlights:

- Daikin Split System Airconditioning to Master Bedroom and Living
- 20mm Smartstone Benchtops throughout
- 2590mm ceiling height downstairs and 2440 upstairs
- 50m² Exposed aggregate driveway allowance
- Floor coverings throughout
- 2x banks of shelves to Master WIR
- 300x600 Niche to all showers
- Westinghouse 900mm Kitchen Appliances
- Flyscreens to all openable windows and diamond grille screen to sliding doors
- Tiles to Porch and Alfresco
- Stained Timber Stairs
- 50m² Exposed Aggregate Driveway allowance
- Clothesline and Letterbox
- 1.85 kw Solar
- 7 Star Energy Rating