



Thurston 309



4



2



2

Total Home Size: 308.65m²



The Thurston 309 design is a spacious and versatile family home that offers a comfortable and functional living space for its residents. With its well-thought-out layout and various features, it's designed to cater to the needs of a modern family.

This home design boasts 4 bedrooms, making it suitable for a family with multiple members or for those who require extra rooms for guests, a home office, or hobbies.

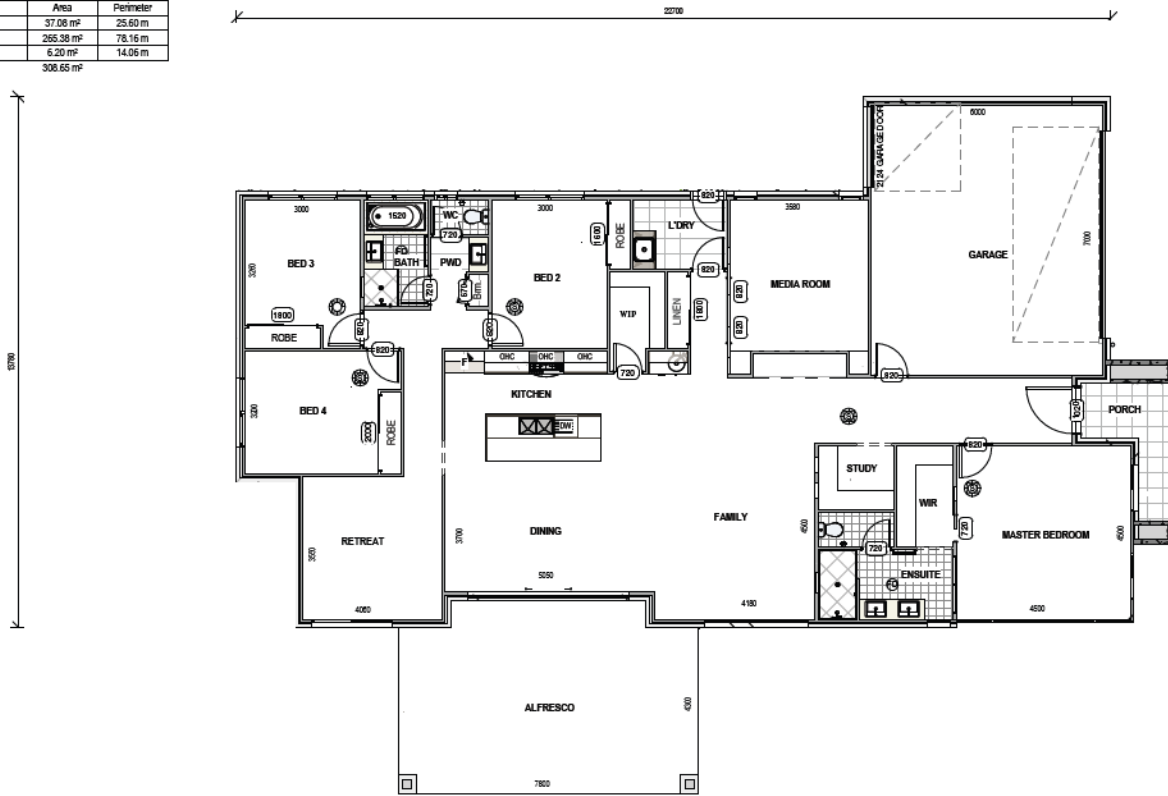
With the inclusion of 3 living areas this emphasizes the focus on providing ample space for family members to relax and engage in various activities.

Contact Zeal Homes today to find out more.

Ph: 0409 337 677

Email: info@zealhomes.com.au

Area Schedule		
Name	Area	Perimeter
Alfresco	37.08 m ²	25.60 m
Floor Plan	285.38 m ²	78.16 m
Porch	8.20 m ²	14.96 m
Grand total 3	308.65 m ²	



Zealy Good Inclusion Highlights:

- Daikin Split System Airconditioning to Master Bedroom and Living
- 20mm Smartstone Benchtops throughout
- 2590mm ceiling height downstairs and 2440 upstairs
- 50m² Exposed aggregate driveway allowance
- Floor coverings throughout
- Westinghouse 900mm Kitchen Appliances
- Flyscreens to all openable windows and diamond grille screen to sliding doors
- Tiles to Porch and Alfresco
- Stained Timber Stairs
- 50m² Exposed Aggregate Driveway allowance
- Clothesline and Letterbox
- 1.85 kw Solar
- 7 Star Energy Rating

