

Balmoral 269



Designed for a sloping-down block, this split-level home offers the perfect blend of style and practicality. Featuring a single-level front and a double-storey rear, it boasts five spacious bedrooms, three bathrooms, and a generous upper-level living area that's perfect for family gatherings.

With its unique layout and thoughtful design, this home is ideal for modern living, making the most of every inch of space.



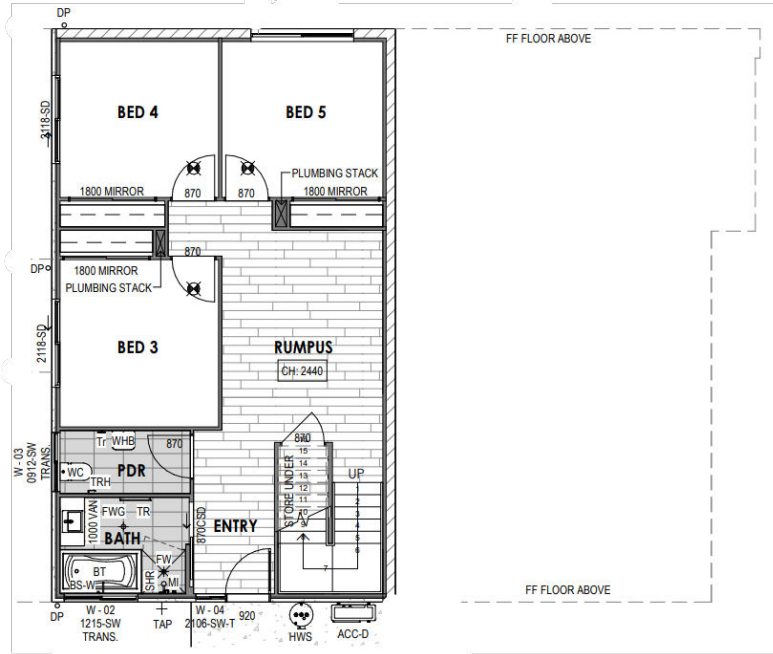
AREA SCHEDULE	
GROUND FLOOR	82.84 m ²
FIRST FLOOR LIVING	125.19 m ²
GARAGE	38.38 m ²
BALCONY	9.49 m ²
BALCONY	5.69 m ²
BALCONY	5.68 m ²
PORCH	1.77 m ²
AREA TOTAL	269.04 m ²



Balmoral 269



Lower Level



Upper Level

