

'Fraser' Duplex



A two-storey home duplex, with each unit providing an ample living space, alfresco area, four bedrooms and 2.5 bathrooms.

- 4 
- 2.5 
- 2 

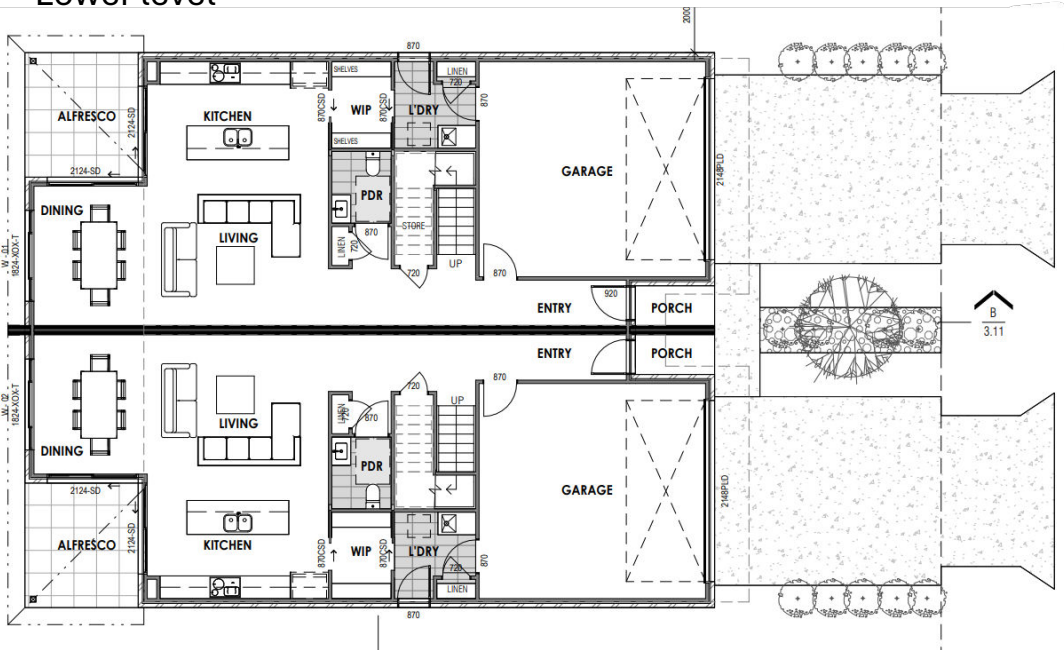
AREA SCHEDULE	
UNIT 2 GROUND FLOOR	83.0 m ²
UNIT 1 GROUND FLOOR	83.0 m ²
UNIT 1 GARAGE	37.8 m ²
UNIT 2 GARAGE	37.8 m ²
UNIT 1 ALFRESCO	10.7 m ²
UNIT 2 ALFRESCO	10.7 m ²
UNIT 1 PORCH	2.9 m ²
UNIT 2 PORCH	2.9 m ²
UNIT 2 FIRST FLOOR	114.0 m ²
UNIT 1 FIRST FLOOR	114.0 m ²
AREA TOTAL	496.8 m ²



Fraser Duplex



Lower level



Upper level

